

The logo consists of two stylized eyes. The left eye is formed by a blue, textured, cone-like shape pointing towards the center, with a black mesh-like iris and a bright white highlight. The right eye is a similar shape, but its iris is a glowing, multi-colored lens with a rainbow-like reflection. Both eyes are set against a dark, textured background that resembles wood grain. The company name 'avenue services' is written in a white, sans-serif font, with the 'a' in 'avenue' being blue and matching the left eye's color.

avenue
services

AVENUE SERVICES EQUIPMENT RATE CARD

BUSINESS RATES

Business rates apply to any profit making business at the stated amount shown below. This relates to any business, from a Sole Trader to a large company which is not registered as a charity or is specifically a non-profit making organisation

CHARITY RATES

Charity rates apply to any non-profit organisations and registered charities, most churches also qualify for this rate.

Avenue Services can offer you the complete package for any Audio Visual need. From simple hires to event production, single item sales to full AV integrated installations, audio and video recording to a finished product with as much trimmings as you request.

PAYMENTS

All the prices show exclude VAT and VAT is charged at the current rate.

Our invoice terms are strictly within 30 days. If payment is not received after 30 days from the original invoice date then an additional increase of 5% is added to the outstanding invoice at our discretion.

Payments can be made either via a cheque or direct bank transfer, details of which are available upon request.

All equipment is supplied in flightcases or padded bags for transport and under no circumstances will be allowed to be hired out without the cases.

Prices listed are daily rates. Weekly rates are generally charged on 3 day weeks.

We will offer package deals on systems, so please ask for more information.

For full details of our Terms and conditions of hire please refer to the end of the booklet for further information.

PA SPEAKERS: ACTIVE & PASSIVE



HK AUDIO CONTOUR CT208 MID/HIGH

1000W line array mid/high speaker with built in hanging points. Works with the CT118 Active sub for line array setup.

Unit Price £50.00



HK AUDIO CONTOUR CT118 ACTIVE SYSTEM BASS

Active direct-loaded subwoofer with two 1000W digital amps and filter presets for the CT208 mid/highs.

Unit Price £50.00



HK AUDIO RIGGING HARDWARE

HK Audio ground stacking or flying hardware for the CT208 speakers.

Unit Price £5.00



HK AUDIO CONTOUR CN112 PASSIVE SPEAKER

Passive 800w speaker with dual use mode as stage monitor foldback or front of house use from small to large venues.

Unit Price £12.50



HK AUDIO CONTOUR CT108 PASSIVE

Compact 400W speaker, supplied with brackets for flying or stand mount. Ideal for low profile/nearfield monitoring or conference setup.

Unit Price £10.00



HK AUDIO F.A.S.T. ACTIVE SPEAKER

Active 300w speaker ideal for use as stage monitor foldback or front of house. Balanced audio input with volume control.

Unit Price £17.50



HK AUDIO LUCAS SMART SYSTEM

A self contained PA system, very portable with a 250W digital amp to power the sub and two satellite speakers. Supplied with stands and cables, 1 mic, 2 line, 1 stereo input.

Unit Price £35.00

AMPLIFIERS & OUTBOARD



YAMAHA P3500S SERIES AMPLIFIERS

Robust Power Amplifier with 2000W per channel @ 4ohms with independent high pass and low pass filters per channel.

Unit Price £25.00



YAMAHA P5000S SERIES AMPLIFIERS

Robust Power Amplifier with 3200W per channel @ 4ohms with independent high pass and low pass filters per channel.

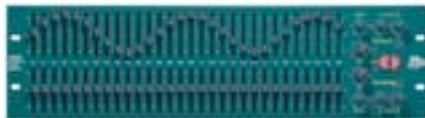
Unit Price £27.50



LA AUDIO DSP MANAGEMENT SYSTEM

2 inputs 4 outputs with 8 bands of EQ on each input and output saving up to 45 presets for loudspeaker processor management.

Unit Price £15.00



BSS OPAL 30 BAND GRAPHIC EQUALISER

30 EQ faders with +/-15db of gain with LF contour filtering and HF contour filtering.

Unit Price £10.00



TC ELECTRONIC M-ONE EFFECTS PROCESSOR

Dual effects processor with more than 20 high quality algorithms for reverbs and delays with dual send returns to also allow presets to be saved.

Unit Price £7.00



TC ELECTRONIC C400XL DUAL GATE/COMPRESSOR

A supreme dual gate/compressor with some useful presets for percussion and voice along with versatility for manual settings too.

Unit Price £5.00

AUDIO CONTROL & MIXERS



ALLEN & HEATH T112 CONTROL SURFACE

A control surface for the Allen & Heath iLive mix rack systems. 28 faders for complete custom of inputs and outputs. Touchscreen for access to all the settings along with analog feel knobs for each channel strip input and output. 8 local audio inputs and 8 local audio outputs on the rear for convenience.

Unit Price £175.00



ALLEN & HEATH IDR-48 MIX RACK

48 inputs and 24 outputs all assignable. Needs a controller to operate, either the T112, a laptop or iPad with the software installed. All processing of EQ, effects and outboard is all contained within with just a single cat5e cable to link the mix rack to the surface.

Unit Price £200.00



50M CAT5E 3XCABLE ON REEL

A 50M cat5e cable drum with 3 cables for connection between the T112 and the mixrack and also a laptop via the network ports.

Unit Price £5.00



ALLEN & HEATH MIXWIZARD 14:4:2 AUDIO MIXER

14 input analog audio mixer with 10 mic inputs & 2 stereo inputs. A main L & R mix out, 4 groups, 6 auxiliaries and 2 matrix outputs. Compact but versatile.

Unit Price £30.00



ALLEN & HEATH ZED 10FX AUDIO MIXER

Extremely compact audio mixer with 4 mic inputs and 3 stereo inputs with an auxiliary output and a built in effects processor.

Unit Price £15.00

MICROPHONES & DI BOXES



SHURE B58 MICROPHONE

Enhanced esteemed vocal microphone that accentuates the warmth and clarity of lead & backup vocals.

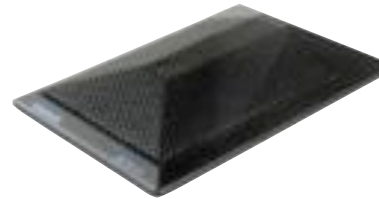
Unit Price £5.00



SHURE B57 MICROPHONE

Improved over its original design for use with amplified or acoustic instruments.

Unit Price £5.00



SHURE B91 PZM MICROPHONE

Integrated XLR preamp with a two position contour switch for kick drum & other low frequency applications.

Unit Price £5.00



SHURE SM58 MICROPHONE

Legendary Shure vocal microphone tailored for vocal response. Rugged & reliable every time.

Unit Price £5.00



SHURE SM57 MICROPHONE

Multi-purpose mic for clean sound reproduction of amplified or acoustic instruments, rugged & reliable.

Unit Price £5.00



AKG D112 MICROPHONE

This kick drum mic is a large diaphragm dynamic microphone with very high SPL capability. Useful for bass guitar cabs too.

Unit Price £5.00



AKG C391 CONDENSOR MICROPHONE

Versatile cardioid condenser microphone with an SE300 output module and a CK91 cardioid capsule. Ideal for overhead mic'ing

Unit Price £5.00



AKG C451 CONDENSOR MICROPHONE

This cardioid condenser microphone is ideal for lectern, percussion, recording and drums.

Unit Price £5.00

MICROPHONES & DI BOXES (CONT)



SENNHEISER E845 MICROPHONE

The e845 is a high performance super cardioid lead vocal microphone with an excellent high frequency response for stage use.

Unit Price £5.00



AKG 747 CONDENSOR MICROPHONE

This versatile enhanced hyper-cardioid polar pattern microphone is ideal for use on lecterns and overhead. It comes with the gooseneck & adaptors etc. In pairs.

Unit Price £10.00



DYNAMIC D606 MICROPHONE

Quality cardioid dynamic microphone designed for use with drums and percussion instruments. Supplied with bracket.

Unit Price £2.50



AKG D190E MICROPHONE

A cardioid dynamic microphone useful for instrument mic'ing close range.

Unit Price £3.00



AUDIO TECHNICA AT-4040 CONDENSOR MICROPHONE

This side address condenser microphone features a large diaphragm for smooth natural sounds. Comes with the cradle.

Unit Price £10.00



SAMSON CO2 CONDENSOR MICROPHONE

These super cardioid pickup pattern condensor microphones come in pairs and are great for ambient overhead mic'ing.

Unit Price £5.00



SAMSON S-DIRECT DI BOX

DI box with switchable input levels for instrument & speaker levels. 48v phantom power or 9v battery with ground lift.

Unit Price £2.00



SAMSON S-DIRECT PLUS STEREO DI

A stereo version of the S Direct with two inputs and two outputs. 48v phantom power and 9v battery with ground lift.

Unit Price £2.50

MICROPHONES & DI BOXES (CONT)



LD SYSTEMS ACTIVE DI BOX

A DI box with switchable input levels from -20db to 0db. ground lift with 48v phantom power and 9v battery power.

Unit Price £2.00



BEHRINGER ULTRA-DI STEREO BOX

A simple two channel DI box which can be linked or separate, -20db to 0db switch and ground lift switch.

Unit Price £2.00



LA AUDIO TRANSFORMER BALANCING

A dual 600ohm transformer balancing interface. A ground lift switch is provided for the elimination of ground loops. Its designed for the balancing of outputs of unbalanced equipment.

Unit Price £5.00

AUDIO EQUIPMENT



ALESIS HD24 HARD DISK RECORDER

A 24 track digital hard drive based recorder. Analogue and digital inputs ADAT recorder using standard IDE hard drives.

Unit Price £50.00



PHONIC PAA2 AUDIO ANALYSER

A real-time audio analyser loaded with features for accurate measurement using a 31band EQ, a built in microphone for 30db to 130db sound pressure levels.

Unit Price £10.00



IKEY AUDIO RM3 DIGITAL AUDIO RECORDER

A simple to use, SD memory card based USB audio recorder which takes inputs from line and microphone inputs either front or rear. Records to 44.1khz WAV files or MP3 audio files.

Unit Price £9.00



TASCAM CD-160 MKII CD PLAYER

Rack mounted CD player with clear to use transport buttons for ease of use in dark venues

Unit Price £5.00

AUDIO EQUIPMENT (CONT)



CITRONIC CD-1X DUAL DJ CD PLAYER

A dual DJ CD player with dual controls with separate outputs.

Unit Price £15.00



BEHRINGER DJ MIXER VMX100

This DJ audio mixer has line and phone level inputs with dual outputs. Has BPM displays and beat matching indicator. Simple to use.

Unit Price £5.00



PDA200 INDUCTION LOOP AMPLIFIER

A 200sqM induction loop amplifier for the relay of audio for people using the 'T' system on their hearing aids. Supplied with 100M of induction loop cable and loop tester for setting up and level check.

Unit Price £15.00



SHORT BOOM MIC STAND

A short boom mic stand with small heavy metal base for close positioning, extendible pole and arm.

Unit Price £1.00



TALL BOOM MIC STAND

A tall boom mic stand with extendible pole and arm.

Unit Price £2.00



KINSMAN SPEAKER STANDS

Supplied in pairs in a carry bag. Extendible up to 1.8m. Air-cushioned/locking extension pole.

Unit Price £5.00

RADIO MICROPHONES



TRANTEC S5.3 RACKED 'N' READY 4 WAY SYSTEM

A 4 channel UHF 16 selectable channel radio microphone system all racked and ready to go. Comes with audio multicore, external aerials and 20M aerial cables. Supplied with a customer defined set of transmitters either beltpack or handheld. Beltpack transmitters can either be used with the standard lapel microphone or the very small, lightweight headset mics. Use a single AA battery for up to 9 hours use. These systems can be linked together so that all 8 receivers can use the same two mains powered aerials.

Unit Price £65.00



TRANTEC S5.3 RACKED 'N' READY CUBE

A more compact version of the 4 channel UHF 16 selectable channel radio microphone system all racked and ready to go. Comes with audio multicore, external aerials and 20M aerial cables. Supplied with a customer defined set of transmitters either beltpack or handheld. Beltpack transmitters can either be used with the standard lapel microphone or the very small, lightweight headset mics. Use a single AA battery for up to 9 hours use.

Unit Price £65.00



DISPLAY EQUIPMENT



SANYO XP57 PROJECTOR

A 5000 lumens XGA projector with various lens options for short and long throw setups. Supplied with hanging frame. Multiple inputs for all types of sources.

Unit Price £75.00



SANO PLC-XU78 PROJECTOR

Small desktop 3000 lumens XGA projectors with 1.8-2.1:1 lens throws with a choice of inputs. Can be supplied with hanging brackets.

Unit Price £35.00



DA-LITE FASTFOLD PROJECTION SCREEN

Da-lite fastfold screens are portable screens for quick setup and packdown into a trunk for easy handling and transport. Various sizes from 6' wide to 14' wide available with either front or rear surfaces.

Unit Price £35.00



DA-LITE PULL UP PROJECTION SCREEN

Quick, small, mobile pull up projection screen for simple presentations. Set up in 30 seconds.

Unit Price £15.00



LG 23" LCD FULL HD MONITOR

Full HD monitors with every video/graphic connection available from RF to HDMI. Swivel base and a 5ms response time.

Unit Price £7.00



PANASONIC 42" TH42PS10B PLASMA

A 42" plasma screen with VGA input and video BNC input boards. HD ready.

Unit Price £30.00



SAMSUNG 22" LCD MONITOR

1600x1200 resolution LCD monitor with VGA inputs

Unit Price £5.00



VOGELS PLASMA DISPLAY STANDS

Plasma, LCD desktop stand/trolley

Unit Price £5.00

VIDEO CONTROL EQUIPMENT



EXTRON ISS506 SEAMLESS SWITCHER

Universal 6 input seamless switcher for computer and video inputs with video to VGA outputs scaled. Main and preview outputs.

Unit Price £45.00



EXTRON MPS-112 MEDIA PRESENTATION SWITCHER

Simple presentation switcher with video, S-video and VGA with audio inputs. Separate outputs.

Unit Price £15.00



PANASONIC WJ-MX12 VIDEO MIXER

A simple vision mixer with either two composite or two S-video inputs with audio. Outputs to both composite and S-video with an ext. camera input for DSK.

Unit Price £25.00



RENEWED VISION: PROVIDEOPLAYER

Mac Software

Mac based video playback software for large screen, multi screen, soft-edged blending screen display. Plays multiple files and has complete visual control of individual video clips.

Unit Price £15.00



IWORK KEYNOTE & MS POWERPOINT

Presentation software either Microsoft PowerPoint or Apple iWork Keynote

Unit Price £5.00



APPLE MACPRO COMPUTER

Fully loaded Apple MacPro with dual 8 core Intel CPUs, 3TB HDD, 6GB RAM, dual ATI graphic cards with dual DVI outputs, dual superdrives, the latest MAC OSX.

Unit Price £45.00



APPLE MAC MINI COMPUTER

Intel Core2Duo processor with MS Office, iWork, dual outputs, superdrive and latest MAC OSX.

Unit Price £20.00



APPLE MACBOOK PRO LAPTOP

Intel iCore5 CPU 3GB RAM all up to date with DVI output for projector display connection.

Unit Price £35.00

VIDEO CONTROL EQUIPMENT (CONT)



EXTRON P/2 DA4XI 4 WAY VGA DA

1 in 4 out VGA distribution amplifier.

Unit Price £10.00



EXTRON MDA 4V VIDEO DA

1 in with loop thru to 4 BNC outputs for composite video signal.

Unit Price £5.00



EXTRON MSW 4V VIDEO SWITCHER

A simple 4 way video switcher on BNC with dual outputs for composite video.

Unit Price £15.00



LG MULTI FORMAT HDD DVD RECORDER

A hard drive based AV recorder with DVD burner. up to 110 hours of recording

Unit Price £15.00



TWIN 7" LCD MONITORS RACK MOUNT

Dual input with loop thru on BNC for each monitor. Contrast, colour, brightness and flip and mirror image controls for each screen.

Unit Price £15.00

PRE-BUILT RACKS READY TO GO

ALLEN & HEATH IDR-48 RACK WITH MAINS AND WIRELESS ROUTER

Racked up ready to go. Comes with 16A mains inlet, rack PSU with LED lights and wireless router for wireless access to the mixrack system. Sleeved 10U rack on wheels.

Unit Price £200.00

ANALOGUE AUDIO OUTBOARD RACK

8U rack with Tascam CD160-MKii, BSS Opal EQ, TC Electronic M-One effects and TC Electronic C400XL gate/compressor. All prewired into VDC loom and 16A mains in and 13A plugboard on rear.

Unit Price £60.00

AMPLIFIER RACK: 12KW POWER @ 40HMS

Comes with 3 x Yamaha P3500S amplifiers all prewired into patchbay with XLR in and speakon out. Also included is an LA Audio DSP2044 speaker management processor with XLR in and out patchbay. Sleeved 8U rack on wheels

Unit Price £85.00

VIDEO PRODUCTION RACK

Preset video production rack with twin 6" LCD monitors, Extron ISS506 switcher, LG HDD/DVD player/recorder, Apple Mac Mini with keyboard and wireless mouse + Monitor all connected with rear patchbay for external computer and video inputs into switcher with main and preview outputs from switcher to internal 6" LCDs and external monitors. Powercon 16A mains cable inc. Sleeved 10U rack on wheels.

Unit Price £150.00

GENERAL PRODUCTION CASE

9U rack with 4 rack drawers as a complete production kit, including a selection of mics, DI boxes, cable ties, batteries, gaffa tape, electrical tape, cat5e convertors to VGA and video, audio adaptors, video adaptors, back to backs, safety bonds etc all on wheels.

Unit Price £70.00

AUDIO & VIDEO CABLES



VDC MXLR - FXLR AUDIO CABLE

VDC cable comes in 1M, 2M, 5M, 10M lengths

Unit Price £1.00



VDC FXLR - PHONO AUDIO CABLE

VDC cable comes in 2M lengths

Unit Price £1.00



VDC MXLR - PHONO AUDIO CABLE

VDC cable comes in 2M lengths

Unit Price £1.00



VDC MONO JACK - PHONO AUDIO CABLE

VDC cable comes in 2M lengths

Unit Price £1.00



VDC MXLR - ST JACK AUDIO CABLE

VDC cable comes in 2M lengths

Unit Price £1.00



VDC FXLR - ST JACK AUDIO CABLE

VDC cable comes in 2M lengths

Unit Price £1.00



VDC ST JK - ST JK AUDIO CABLE

VDC cable comes in 2M lengths

Unit Price £1.00



VDC NEUTRIK SPEAKON TO SPEAKON

VDC cable comes in 5M, 10M and dual 20M lengths.

Unit Price £3.00

AUDIO & VIDEO CABLES (CONT)



VDC 12 WAY (8/4) 35M MULTICORE ON REEL

VDC 12 channel multicore spun on a drum with integral stage box, 8 sends and 4 returns all XLR

Unit Price £10.00



50M CAT5E 3XCABLE ON REEL

A 50M cat5e cable drum with 3 cables for connection between either the Allen & Heath iLive system or for using with the cat5e VGA or video convertors

Unit Price £5.00



VDC 32 WAY (24/8) 50M MULTICORE

VDC 50M 32 way multicore with 24 sends and 8 returns all XLR. 2m tails all in cable trunk.

Unit Price £15.00



VGA CABLES M-F & M-M (1M-40M)

VGA cabling both male to male and male to female configurations in 1M, 2M, 5M, 10M, 20M, & 40M lengths.

Unit Price £4.00



VDC TYPE 1/3 BNC TO BNC VIDEO CABLES (1M-40M)

BNC video cabling various lengths with BNC barrels for extending.

Unit Price £2.00



VGA + AUDIO OVER CAT5E KIT

VGA & audio over cat5e cable for up to 150M cable length. Mains powered with adjustments for skew and EQ settings. Supplied with transmitter and receiver.

Unit Price £10.00



AUDIO & VIDEO OVER CAT5E KIT

Video with audio over cat5e cable for up to 150M cable length. Passive, no mains needed. Supplied in pairs.

Unit Price £5.00

MAINS DISTRIBUTION & CABLES



32A DIST 4 X 16A, 2 X 13A MCB

MCB protected 32A inlet to 4 16A outlets with 2 13A outlets. Rubber boxed for protection and all separate MCBS for each output.

Unit Price £12.00



16A - 5 X 16A DISTRIBUTION

16A inlet to 5 16A outlets splitter. MAX Load 16A.

Unit Price £3.00



63A PLUG TO 63A/32A CONNECTOR

Various lengths. 63A 3phase to 32A 3phase adaptor.

Unit Price £6.00



32A PLUG AND CONNECTOR CABLE

32A 3 phase cable extension. Various lengths. with 32A to single phase adaptor.

Unit Price £5.00



32A PLUG & CONNECTOR CABLE

32A single phase mains extension cable.

Unit Price £3.00



16A PLUG & CONNECTOR CABLE

16A single phase mains extension cable. Various lengths.

Unit Price £2.00



16A TO 13A PLUG BOARD

16A inlet to 13A 4 way plug board.

Unit Price £2.00

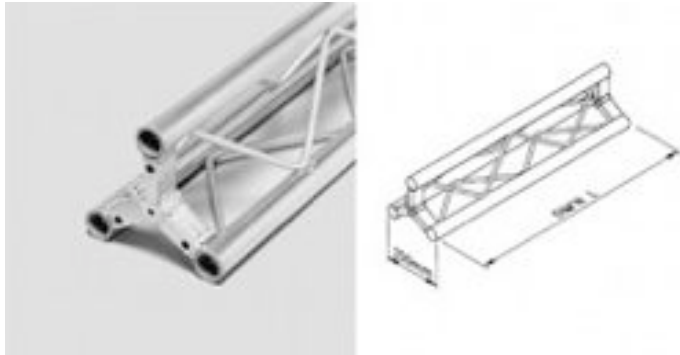


13A 4 WAY PLUG BOARD

13A plug to 4 way 13A plug board with 13A fuse. Various lengths.

Unit Price £1.00

RIGGING HARDWARE/TRUSS/STANDS



METALWORX TT TRIANGULAR TRUSS

Truss lengths various. Triangular.

Unit Price/M £10.00



LIFTING SLINGS/STROPS

Various lengths and load bearing options.

Unit Price £1.00



500KG CHAIN HOIST

Manual chain hoist for up to 500kg MAX loading

Unit Price £10.00



POWERDRIVE WINCH STAND

Manual heavy duty winch stands up to 5M and 200KG lift.

Unit Price £35.00

GENERAL

In these Terms & Conditions of Hire the following words shall have the following meanings: -

"OWNER" Avenue Services of registered address 81 Gordon Road, Herne Bay, Kent, CT5 5QX, UK

"HIRER" Means the Hirer of the Equipment

"EQUIPMENT" Means those products or Equipment itemised on the Rental Quotation or Delivery Note and these Terms & Conditions shall apply to the agreement under which the Equipment is to be supplied for rental

1. AGREEMENT

This Agreement is a Hire Agreement; under its terms the Owner hires the Equipment to you for the purposes of your business. The Equipment does not become yours and you must not sell it.

2. YOUR OBLIGATIONS UNDER THIS AGREEMENT

You shall:

2.1 The Owner shall provide preventative maintenance in accordance with the Contract on a scheduled basis agreed with the Hirer and remedial maintenance to return the Equipment to a satisfactory operating condition when required. Neither the Hirer's personnel nor any third party employed by the Hirer shall provide any part of the maintenance service without the prior agreement of the Owner, which shall not be unreasonably withheld.

2.2 Not modify the Equipment. The Owner reserves the right to charge you for remedying any damage resulting from use otherwise than in accordance with the manufacturer's instructions.

2.3 Keep the Equipment safe at all times.

2.4 It is your responsibility to insure the Equipment against all risks for the value of the Equipment as detailed on the rental quotation.

2.5 Not sell, assign, let on hire or otherwise dispose of part with possession of the Equipment or assign or charge the benefit of this agreement.

2.6 Acknowledge that payments sent through the post will be at your own risk.

2.7 Pay the rental and advance payment (where applicable) on the due dates.

3. LIABILITY

3.1 The Equipment is at your risk.

3.2 The Owner hereby warrants to the Hirer that each item of Equipment, when delivered, will be in fully serviceable condition and complies with the manufacturer's proper specification.

3.3 The Owners liability hereunder will in no circumstances exceed a sum equivalent to the total rentals received by the Owner. The foregoing warranty and damages for breach thereof are the exclusive warranty and damages for breach thereof are in lieu of any oral representation and all other warranties and damages whether implied or statutory. The Owner does not warrant the merchantability of the Equipment or its fitness or suitability for any particular purpose or use. The Hirer should be solely responsible and hold the Owners fully indemnified against any loss damage or injury (including death) to persons or property occurring in connection with any of the said Equipment or as a result of the use thereof.

3.4 The Owner accepts no liability in contract or tort for any loss, injury or damage, (including consequential or financial loss) sustained by reason of latent, apparent or patent defects in the Equipment, parts or consumables, or late, or non delivery. This does not apply to death or personal injury as a direct result of the Owner's negligence.

3.5 Notification of a defect to the Owner does not in itself give you the right to vary or terminate this agreement, but if the Owner does not receive such notice from you within 2 days of the acceptance date, then it will be presumed that the Equipment is complete in good working order and condition and fit for all purposes for which it may be required.

3.6 You acknowledge that the Owner is not responsible for any loss damage or expense resulting from delay in the delivery or installation of the Equipment unless directly the fault of the Owner.

4. PERIOD OF HIRE

4.1 The period of hire will be agreed at the outset.

5. COMMENCEMENT AND END OF HIRE

5.1 Hire commences on the day the Equipment is delivered, to the Hirer's advised delivery point. End of hire is the agreed date and time the equipment is to be returned. Late returns are payable at 10% of the rental quotation total each day thereafter that the equipment is not returned.

6. OPERATING CONDITIONS

6.1 Unless notified in by the Hirer within twenty four hours after the delivery has been effected it shall be conclusively presumed that the Equipment was received in a fully serviceable condition and in complete accordance with the customer's order and manufacturer's description. The Hirer shall ensure that the Equipment is in fully serviceable condition and suitable for use at any site on which the Equipment is situated.

7. TRANSPORTATION AND OTHER CHARGES

7.1 In addition to the hire charge a separate charge may be made in respect of initial delivery, subsequent collection and miscellaneous charges as previously agreed in writing. It is the responsibility of the Hirer to arrange the prompt return of the Equipment to our premises.

8. DAMAGE TO AND/OR LOSS OF EQUIPMENT

8.1 The Hirer will in its use of the said Equipment observe all the instructions that may be issued for the proper use thereof and shall be entirely responsible for any damage caused to the said Equipment through failure to observe such instructions or failure to use the same in a proper manner. The Hirer will be responsible for the replacement cost of any damaged or lost components of the unit or any repair. The Owner accepts no responsibility or liability for any damage to or failure of operation of the Equipment due to any incompatibility with any other Equipment used by the Hirer and the Hirer shall bear all liability thereof.

9. NON RETURN OF EQUIPMENT

9.1 The Hirer will be responsible for the safe return of the Equipment. The Hirer will be responsible for hire cost until such time as the Equipment and/or any missing components are returned at the rate of 10% of the Rental Quotation a day.

10. DEFAULT/TERMINATION

10.1 The Owner may by due notice in writing terminate this agreement and/or the Hirer's right to possession of the Equipment at any time during the continuance of the agreement if any of the following events shall have occurred namely: -

10.1.1 A repudiatory breach by you constituted by your failure to observe or perform any obligation under this agreement (including a failure to pay rentals on the due date whether demanded or not)

10.1.2 Any distress, execution or legal process levied on the Equipment or any premises where the Equipment may be or upon any of your goods or other property or you permit any Judgment against you to remain unsatisfied for seven days

10.1.3 If you, being an individual, have an interim or final bankruptcy order made against you or become subject to any voluntary arrangement or are sequestrated or negotiate for any composition arrangement or assignment with any of your creditors

10.1.4 If you, being a body corporate, go into administration or liquidation or have a Receiver or Administrative Receiver appointed over all or any of your assets or are deemed under Section 123 of the Insolvency Act 1986 to be unable to pay your debts

10.2 Immediately upon termination you shall pay to the Owner all arrears of rentals at the date of termination and as agreed compensation for loss of profits, the aggregate of all sums equal to all rentals which but for such termination would have been payable but you during the remainder of the terms of this agreement discounted for early payment at the rate of 5% per annum and you shall also deliver the Equipment to the Owner as hereinafter provided. Upon recovery of possession of the Equipment the Owner will use all reasonable endeavours to sell it and the net proceeds of sale will be applied against your liability under this section.

10.3 Upon expiry of this agreement howsoever arising you shall return the Equipment to the premises nominated by the Owner. In default of delivery up the Owner shall be entitled to enter into any premises where the Equipment is situated in order to take possession of the same.

11. CANCELLATION

11.1 Cancellation of order can only be accepted with the Owners written consent on terms which indemnify the Owner against loss.

12. NOTICES

12.1 Notice under the terms of this agreement shall mean any notice, letter or demand in writing. Notices may be given by either party to the other by posting the same in the ordinary second class mail to the address of the other party as advised by them or to such other address as may previously have been advised in writing. Any notice shall be deemed to have been received three days after posting to the address supplied or advised. If the Hirer consists of more than one person, a notice, letter or demand posted to one of them at the address supplied will be deemed to have been received by each of them three days after posting.

13. ENTIRE AGREEMENT

The Owner hires the Equipment to you upon these Terms and the Conditions which represent the entire agreement between you and the Owner. Any variation to the Terms and Conditions shall not bind the Owner unless the same is confirmed in writing and signed by a Director of the Owner. Any failure by the Owner to enforce the terms of this agreement at any time or other indulgence granted to the Hirer shall not operate as a waiver as the rights of the Owner.

14. FORCE MAJEURE

The Owner accepts no liability for delay or non-fulfilment of any terms of any order by a Hirer caused wholly or in part by force majeure which express shall be deemed to include war, strikes, lock outs, accidents, fire, scarcity of materials or any other cause or causes not within the Owners direct control.

15. VAT CHARGES

Prices advertised are plus VAT which is charged at the rate in operation at the relevant tax point date and included where applicable or detailed.

16. GOVERNING LAW

This agreement shall be governed by the Law of England. Both parties submit to the non-exclusive jurisdiction of the English Courts.

By hiring the Equipment specified overleaf you agree to these terms and conditions.

ALL PRICES SHOWN ARE EX VAT, VAT CHARGED AT CURRENT RATE. PRICES ARE DAILY RATES WITH WEEKLY SET @ 3 DAY WEEKS. FULL TERMS & CONDITIONS DETAILED BELOW. LAST UPDATED DEC 2010



